



ESTADO PLURINACIONAL DE  
**BOLIVIA**

MINISTERIO DE DESARROLLO  
PRODUCTIVO Y ECONOMÍA PLURAL

VICEMINISTERIO DE  
TURISMO

# PHOTO CATALOGUE

Visit Bolivia







Laguna Colorada – Eduardo Avaroa Andean Fauna National Reserve







## Uyuni Salt Flat and Colored Lagoons

It's the largest and highest salt desert in the world, encompassing an area of 10,582 km<sup>2</sup>. In it we find a universe full of stars, sunsets with infinite reflections, cactus islands in the middle of a sea of salt, games of perspective for photography. In its surroundings there are colored lagoons at more than 4,000 meters above sea level, full of flamingos, valleys of colors, this is how this destination is.

**Accessibility by land and air**

**Services:** Gastronomy / Transportation / Lodging / Entertainment

**Activities to do:** Landscape tour / Photography / Ecotourism



# Oruro Carnival

Is the maximum expression of the carnivals in Bolivia. It takes place in the city of Oruro during the month of February. In 2008, the Oruro Carnival was declared masterpiece of the oral and intangible heritage of humanity by UNESCO. More than 50 thousand dancers and 20 thousand musicians participate in this event, representing a variety of textiles, embroidery and artistic performance worthy of being appreciated by humanity.

**Accessibility by land:** The route to Oruro begins in the city of La Paz (road of 226 Km.) or the City of Cochabamba (road of 213 Km.). The journey takes 3 hours in both cases.

**Services:** Gastronomy/Transportation/Lodging/Entertainment

**Activities to do:** Landscape tour/Photography/Historical-cultural tours





# Valleys of Cochabamba

The Gastronomy of Cochabamba is widely known in the rest of Bolivia for its exquisite recipes based on local products, fused to obtain a variety of ingredients with seasonings and aromas that make it a unique gastronomy, with dishes such as 'Silpancho Cochabambino', 'Pique a lo Macho', 'Chicharrón', 'Fideos Uchu' and much more, to the delight of the visitors.

**Services:** Gastronomy / Transportation / Lodging / Entertainment

**Activities to do:** Rafting / Ecotourism / Landscape Tour / Gastronomic Tours.





## Rurrenabaque Madidi-Pampas

Madidi is the protected area with the greatest biodiversity in the world, with a diversity of ecosystems, endemic plants and the possibility of observing multiple species of fauna in its natural environment that makes it an unforgettable place, offering visitors a wide range of experiences in the Amazon's best preserved and most pristine area on the continent. Likewise, there is an important presence of Community-Based tourism enterprises, especially in the Tacana and San José de Uchupiamonas indigenous territories, pioneers in this form of community association in tourism.

### Accessibility by land

**Services:** Gastronomy / Transportation / Lodging / Entertainment

**Activities to do:** Photography / Ecotourism / Landscape tour / Trekking



# Tarija, Wine and Singani Route

The Route extends from the San Lorenzo Valley to the Municipality of Uriondo, passing through the city of Tarija itself and surrounding agricultural sectors, in a circuit that crosses countless artisanal wineries, vineyards, industrial wineries, communities, etc

**Accessibility by land:** The route starts from Tarija city, 80 km. from the center.

**Services:** Gastronomy / Transportation / Lodging / Community Tourism

**Activities to do:** Landscape tour / Photography / Agrotourism





## Cordillera Real- North and South Yungas- La Paz

The old road from La Paz to Los Yungas is known as 'The Death Road', a cycling route of approximately 80 km. of extension that unites the La Paz city and the Region of Los Yungas. The descent begins in La Cumbre and ends in the town of Yolosa, it is full of emotions and attracts lovers of mountain bike adventure.

**Accessibility by land:** There is a daily transport from MINASA terminal in La Paz city to North and South Yungas by paved road.

**Services:** Gastronomy / Transportation / Lodging / Community Tourism

**Activities to do:** Landscape tour / Photography / Cycling





## Cordillera Real- North and South Yungas- La Paz

Sorata is a valley with a temperate climate and wonderful scenery, located at the foot of the snowy mountain Illampu, one of the highest snow-capped peaks in the Cordillera Real at 6,380 m.a.s.l. Its architecture still preserves the feel of wealth that was experienced at that time, when it was a booming commercial mining center. The Sorata Valley is an ideal place for rest and tranquility in the midst of exuberant vegetation.

**Accessibility by land:** It's located in the Larecaja Province, 150 km. from La Paz city.

**Services:** Gastronomy / Transportation / Lodging / Entertainment

**Activities to do:** Ecotourism / Photography / Trekking / Speleology.





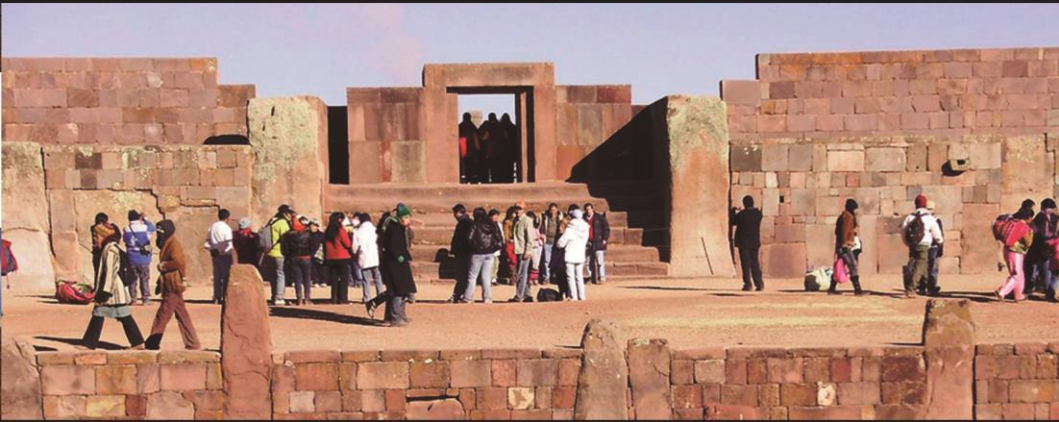
# Tiwanaku

Tiwanaku is one of the archaeological wonders of South America. This pre-Inca city was built around the 3rd century B.C. for the tihuanacotas. Due to its Andean cultural richness, UNESCO declared this complex as Cultural Heritage of Humanity in 2000.

**Accessibility by land:** It is located near the southeast coast of Lake Titicaca, about 72 km. (44 miles) west of the city of La Paz.

**Services:** Gastronomy / Transportation / Lodging

**Activities to do:** Historical-cultural tours / Architectural tours





# Oruro – Altiplano of Enchantment

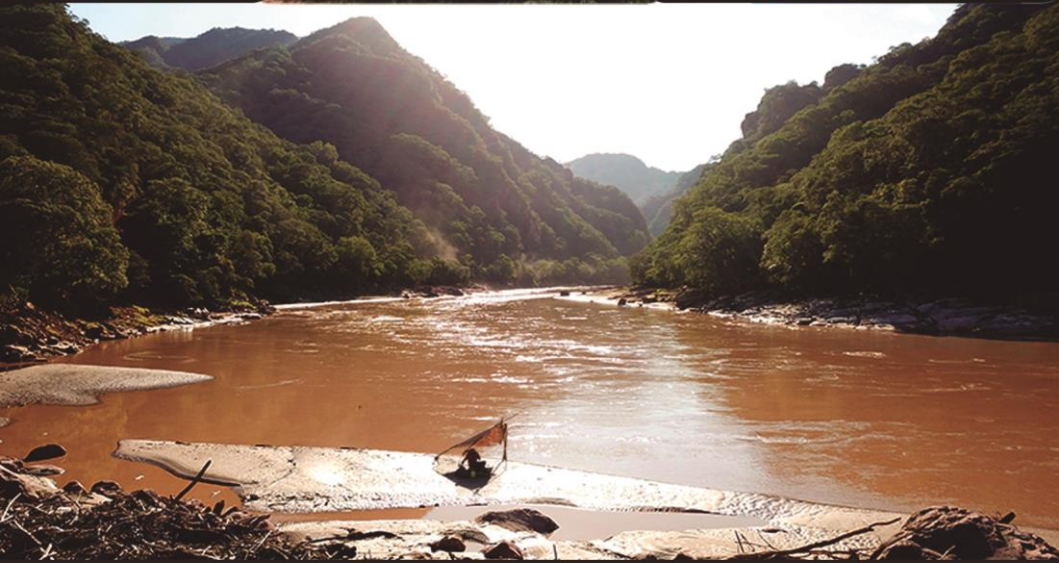
**Sajama National Park** located in the Cordillera de Los Andes northwest of the Department of Oruro, in the border area with Chile. Among the natural beauties that it concentrates, is the highest snow-capped mountain in Bolivia, El Sajama with 6,542 meters above sea level.

**Accessibility by land:** The distance from La Paz to Sajama's National Park is 286 km. and from Oruro 190 km.

**Services:** Gastronomy / Transportation / Lodging / Community Tourism.

**Activities to do:** Landscape tour / Photography / Ecotourism / Mountain climbing





## The Bolivian Chaco

Nature, culture and history are the main pillars that sustain the tourist offer of Villamontes. For those who wish to enjoy nature and gastronomy based on fishing, they can go to the majestic Pilcomayo River, through a 50 km journey, full of stories, in which they have an experiential experience with the Weenhayek culture and with impressive landscapes with waterfalls, pools and cliffs, in addition to the possibility of acquiring handicrafts from the Guarani culture, knowing the variety of flora, fauna and much more.

**Accessibility by land:** Located 213 km. from Tarija city.

**Services:** Gastronomy / Transportation / Lodging / Entertainment

**Activities to do:** Fishing / Rock climbing / Ecotourism / Trekking



# Titicaca Lake

On the plateau of the Bolivian altiplano, almost touching the sky at 3,810 meters above sea level, is Lake Titicaca and on its shores is Huatajata, surrounded by an extraordinary natural and cultural beauty, absolutely welcoming, with an exquisite cuisine that invites the visitor to live a unique experience during your stay, in addition to enjoying boat rides, hiking, taking pictures, a close look at the lake birds and much more.

**Accessibility by land:** Located 87 km. from La Paz city, one hour on paved road.

**Services:** Gastronomy / Transportation / Lodging.

**Activities to do:** Birdwatching / Photography / Fishing / Beekeeping.



# Potosí - Chuquisaca

**Torotoro** is a town located in the North of Potosí, where the Torotoro National Park is located, one of the 22 protected areas of national interest. A true paradise for lovers of geology and paleontology where you can find sites of paleontological interest with dinosaur footprints, geological formations such as the City of Itas, sites of speleological interest such as the Umajalanta Cavern, as well as the Grand Canyon of Torotoro and el Vergel, a beautiful natural landscape formed by falls and pools of crystal clear waters.

**Accessibility by land:** The route to Torotoro begins in the city of Cochabamba, a road of 138 km. which is traveled in a time of between 3 and 4 hours.

**Services:** Gastronomy / Transportation / Lodging / Entertainment.

**Activities to do:** Trekking / Ecotourism / Landscape tour / Historical - cultural tours / Rock climbing / Speleology / Biking.





**Llallagua** located in the Rafael Bustillo province of the Department of Potosí, an industrial, university and important city within the historical process generating an attractive infrastructure for tourism. Discover the secrets that hide the high plateaus of the eastern mountain range.

**Accessibility by land:** It is located 232 km from Potosí city and 101 km southeast of Oruro city.

**Services:** Gastronomy / Transportation / Lodging / Entertainment.

**Activities to do:** Rock climbing / Photography / Hot springs.



**Tarabuco** Tarabuco is the capital of the Yamparáez province in the Department of Chuquisaca. It is known as the home of the Yampara culture, famous for its traditional fabrics, the typical Pujllay dance and celebrating the last carnival in Bolivia.

**Accessibility by land:** It is located 66 km from Sucre city, it's recommended to make the trip on Sundays to visit the craft market.

**Services:** Gastronomy / Transportation / Lodging / Entertainment

**Activities to do:** Historical-cultural tours / Experiential Tourism / Trekking





# Santa Cruz Valleys, Samaipata and The Route of Che

**Samaipata** is a quiet town with colonial buildings and a pleasant climate. Samaipata in Quechua means "rest on the heights" and is located at 1.650 meters above sea level. In Samaipata is an important archaeological site known as El Fuerte and is it's also the entrance to one of the most important national parks in Bolivia: the Amboró National Park and Integrated Management Natural Area.

**Accessibility by land:** Samaipata is located 120 km. from Santa Cruz de la Sierra city.

**Services:** Gastronomy / Transportation / Lodging / Entertainment.

**Activities to do:** Trekking / Ecotourism / Landscape tour / Historical - cultural tours.





# Jardín de las Delicias (Garden of Delights)

Located in the Municipality of El Torno in the Department of Santa Cruz. Crystal clear waters, golden sand beaches, waterfalls over 90 meters high and endless varieties of plants and animals are part of the attraction of the Garden of Delights, located in the Southwest area of the Amboró National Park and Integrated Management Natural Area.

**Accessibility by land:** It's located 70 km. from Santa Cruz city and 35 km. from the Municipality of El Torno.

**Services:** Gastronomy / Transportation / Lodging / Community Tourism

**Activities to do:** Birdwatching / Photography / Fishing / Beekeeping





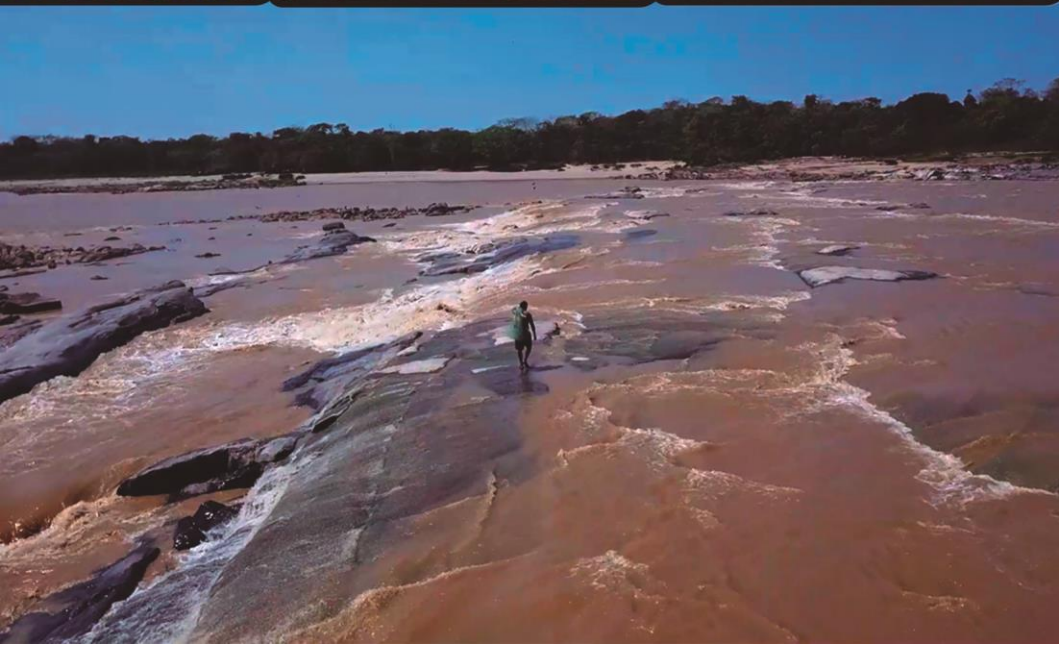
## North Amazon

**Guayaramerín** located in the Department of Beni on the border with Brazil, on the banks of the Mamoré River through the Amazon basin. At 44 kilometers from Guayaramerín is Cachuela Esperanza, declared a National Historical Monument, a region where the rubber boom took place. It preserves its traditions reflected in its cultural and artistic celebrations, craft fairs, typical foods and popular games, characteristic of the region. Guayaramerín is part of the Ichilo – Mamoré waterway, crossing the Departments of Beni and Cochabamba.

**Accessibility by land:** from Beni to Guayaramerín it is 396 km. away. Airway is available from La Paz and other cities in Bolivia.

**Services:** Gastronomy / Transportation / Lodging / Entertainment

**Activities to do:** Architectural tour / Photography / Boat ride.







Cathedral of the Immaculate Conception – Jesuit Missions of Chiquitos



# PHOTO CATALOG

---

MINISTRY OF DEVELOPMENT  
PRODUCTIVE AND PLURAL ECONOMY  
VICEMINISTRY OF TOURISM

**Visit Bolivia**

